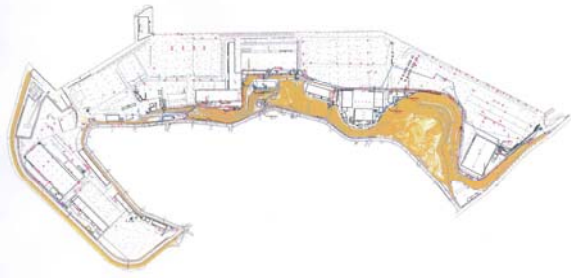


Vacuflow® Vacuum Sewer system



Vacuum station entry, with vacuum pumps underground



Underground station, collection chambers has 1 to 3 vacuum valves installed due to the flow.



Heayang 2nd Plant / Korea, Rep. of

Introduction

The Vacuflow Vacuum Sewer system has been installed for Hyundai Heavy Industries Co., Ltd at the Shipyard, in Ulsan

Specification

A Vacuflow vacuum sewer system has been used for re-construction of the sewage collection system.

Due to a lot of other facilities underground and to avoid huge trenching a Vacuflow vacuum sewer system was chosen.

This project was phase 1 while phase 2 for the main shipyard will also be executed with a Vacuflow vacuum sewer system.

Technical information

- Vacuum pumps : 2
- Vacuum valves : 12
- Total vacuum mainline : ± 2250 meters
- Total peak flow : ± 952 l/min

Station equipped with a PLC panel with touch screen and SCADA system

**Project has been executed by our agent:
Hansung Cleantech Co., LTD**



PIPE LAYING